



# The Record

Volume 12, Number 2

Newsletter of the Friends of the Missouri State Archives

Fall 2002

## *A Voyage of Discovery into the Lives of Lewis & Clark*

The Missouri State Archives, in cooperation with the American Culture Studies Program at Washington University in St. Louis and the St. Louis Circuit Clerk's office, is making available online a series of eighty-two circuit court cases relating to Meriwether Lewis, William Clark, and some members of the Corps of Discovery. The records, previously unknown to history, are provided without any access restrictions or charges.

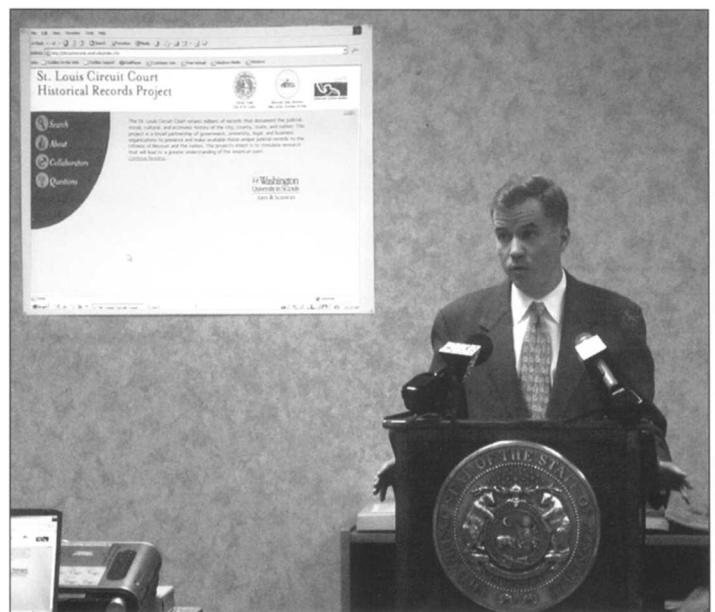
The cases are court actions in which Lewis, Clark, or expedition members, all of whom settled in St. Louis following the journey, were defendants, plaintiffs, or played a prominent role. The cases include documents dating from 1804 to 1833 and provide interesting insight into the divergent lives of Lewis and Clark in St. Louis after their triumphant 1806 return from the Pacific Ocean. With this collection of digitized court records, historians and scholars can begin their own "voyage of discovery" into the lives of these famous explorers.

Meriwether Lewis was appointed governor of the Louisiana Territory. Later, William Clark served as governor of the Missouri Territory as well as Superintendent of Indian Affairs for the region. As both private citizens and businessmen, Lewis and Clark used the legal system to obtain justice – and, just as often, were taken to court themselves.

The series of Meriwether Lewis cases reveal the difficult economic situation he encountered after 1807, when he returned to assume the post of territorial governor. He accumulated more than \$3000 in debt and was in financial ruin just prior to his tragic suicide on the Natchez Trace in 1809. The suits primarily encompass actions against his estate, administered by Edward Hempstead, to recover balances due.

By contrast, the cases concerning the business and financial activities of William Clark, who served an extended public career, reveal the post-expedition success he enjoyed in St. Louis as a business entrepreneur and man of significant property in both land and slaves. Clark's private ventures included leading roles in the St. Louis Missouri Fur Company, significant in the growing international fur trade, and the Bank of Missouri.

This collection of Lewis & Clark / Corps of Discovery case files is part of a larger, long-term initiative which seeks to provide access to the rich materials contained in the St. Louis Circuit Court records. The *St. Louis Circuit Court Project* was initiated in 1999;



*Secretary of State Matt Blunt announces the inauguration of the new St. Louis Circuit Court Historic Records Project Website. The site offers access to eighty-one circuit court cases relating to Meriwether Lewis, William Clark, and some members of the Corps of Discovery. The data base is accessible at <http://aslearning.wustl.edu/CourtRecords-Dev/access.cfm>*

ultimately, over four million pages of original court documents, dating from 1787 to 1875, will be preserved and accessible for research. These records comprise the largest single collection of historically valuable records in Missouri never systematically reviewed by historical researchers. In 2000, work on records from the early years (through 1830) was designated an official project of the national Save America's Treasures program.

The Lewis & Clark expedition sparked the American imagination and Missouri, the place they settled afterward, quickly became the gateway to the western frontier. This innovative collaboration, resulting in online access to unique and significant records, will certainly spark the imagination of those interested in the explorers and their lives in St. Louis and have a pronounced impact on Missouri's place in the history of Lewis and Clark.



### Friends of the Missouri State Archives

*The Record* is published by the Friends of the Missouri State Archives and is distributed as a benefit to its members. The Friends is a not-for-profit corporation, tax exempt under Section 501 (c) of the Internal Revenue Code, and is supported by memberships and gifts. Please address correspondence to Friends of the Missouri State Archives, P.O. Box 242, Jefferson City, Missouri 65102-0242.

The purpose of the Friends of the Missouri State Archives is to render support and assistance to the Missouri State Archives, which was created in 1965 as a division of the Office of the Secretary of State and is the officially designated repository for all state records of permanent value. Its mission is to identify, collect, preserve, and make available to elected officials, state government, historians, students, genealogists, and the general public the permanent and historically valuable records of Missouri's state and local government, which document the origins, development, and activities of the state of Missouri.

Access to collections is provided through the research room which is open to the public: Monday through Wednesday and Friday, 8:00 a.m. to 5 p.m.; Thursday, 8:00 a.m. to 9:00 p.m.; Saturday, 8:30 a.m. to 3:30 p.m. Written research requests are answered by the reference staff within eight weeks.

Visit the Archives on the Internet at <http://www.sos.state.mo.us/archives/>  
The Missouri State Archives is closed Sundays, New Year's Day, Memorial Day, Fourth of July, Labor Day, Thanksgiving and Christmas.

### Board of Directors

Bob Priddy, President  
Wade Nash, Vice-President  
Sandra Walls, Secretary  
Thomas Holloway, Treasurer

Hon. Stephen Ehlmann Ann Carter Fleming  
William Foley, PhD. Lynn Wolf Gentzler  
Louis Gerteis, PhD. Sherman Hayes  
Gary Kremer, PhD. Charles Kruse  
Hon. Stephen Limbaugh Kas Mahfood  
Sally Sprague Hon. Carl Vogel

Ex-officio:  
Matt Blunt, Secretary of State  
Kenneth H. Winn, PhD., State Archivist

Laura Wilson, Archives Staff Liaison  
e-mail: [wilson@sosmail.state.mo.us](mailto:wilson@sosmail.state.mo.us)  
Phone: (573)-526-5326 FAX: (573)-526-7333

Greg Olson, Editor and Designer, *The Record*  
e-mail: [olsong@sosmail.state.mo.us](mailto:olsong@sosmail.state.mo.us)  
Phone: (573)-522-2705 FAX: (573)-526-7333

# From the State Archivist

In 1998 the Missouri State Archives welcomed an invitation to work with the Missouri Lewis and Clark Bicentennial Commission to help lead the work in commemorating the Lewis and Clark Expedition. Since that time, the Archives has been on its own "Voyage of Discovery," creating new and often innovative ways of understanding their Missouri to the Pacific adventure.

On July 3 Secretary of State Matt Blunt, St. Louis Circuit Clerk Mariano Favazza, and Professor Wayne Fields, the Director of the American Studies Program at Washington University, unveiled online eighty-two cases related to Meriwether Lewis, William Clark, or members of the Corps of Discovery, from the St. Louis Circuit Court records. These cases, previously unknown to history, reveal much about the post-expedition lives of the two adventurers and their comrades. This initiative is part of the St. Louis Circuit Court Historic Records Project. (The website address: <http://aslearning.wustl.edu/CourtRecords-Dev/access.cfm>.)

On September 17 Secretary of State Blunt will unveil a special Lewis and Clark Internet site. This site—over three years in the making—offers a virtual tour of Lewis and Clark camp locations across the breadth of the state. There are also new maps, detailing the Missouri River and surrounding fauna at the time of the Expedition. The virtual tour and the maps are rendered as historically accurate as possible, marrying early nineteenth century land records from the Missouri State Archives with the computer mapping expertise of the University of Missouri Columbia's Geographical Resource Center. (This site can be found through the Missouri State Archives site: <http://www.sos.state.mo.us>.)

In February 2003 another aspect of our Lewis and Clark mapping partnership will come to fruition when we open a large exhibit of new maps of the contemporary Lewis and Clark landscape. An early version of some of these maps appeared in the April 2002 issue of the *National Geographic*. Beginning in March this map exhibit will begin an extensive tour of Missouri.

While we are proud of what we have accomplished there is even more on the horizon.

Kenneth H. Winn  
State Archivist

## Upcoming Events at the Missouri State Archives

September 21, 2002,

### A Day Trip to Historic Lexington, Missouri:

Visit the Lexington Battlefield, Anderson House, and Other Historic Sites. Bus departs from the State Information Center at 8:00 a.m. and will return at 5:30 p.m.

Admission is \$30.00 per person, all-inclusive.

Reservations should be made at 522-9689, by September 13.

October 17, 2002, 7:00 p.m.,

### Opening the Ozarks: Historical Geography of the Ste. Genevieve District, 1760-1830, by author Walter A. Schroeder.

November 15, 2002, 7:00 p.m.,

### History of Quilt Making: The Missouri Heritage Quilt Project, with Bettina Havig, project director.

December 19, 2002, 7:00 p.m.,

### The Missouri State Capitol: Colorful Sights and Sounds from Its Past, with Bob Priddy, local author and radio personality.

*Unless noted otherwise, all events are free and open to the public and will take place in the State Information Center, Interpretive Center  
600 West Main Street, Jefferson City, Missouri.*

## Lewis and Clark Historic Landscape Maps to Tour the State as a Traveling Exhibit

Beginning in February 2003, the Missouri State Archives will unveil a traveling exhibition that includes more than thirty groundbreaking maps from the Lewis and Clark Historic Landscape Project. These maps, funded by the Missouri State Archives, detail the Missouri River valley that Lewis and Clark saw on their journey to the Pacific Ocean. With information from old land records and surveys preserved by the Archives, the Geographic Resource Center at the University of Missouri-Columbia used advanced computer technology to create accurate and handsome maps of pre-settlement Missouri and its original natural landscape.

Thanks in part to the generous support of the State Historical Society of Missouri through their Richard S. Brownlee Fund, the Archives will make the exhibit available to Missouri museums and libraries free of charge. Nearly forty institutions have already requested the exhibit.

In July and August 2001, a series of computer-generated maps featuring the nineteenth century landscape were unveiled at a number of press conferences across the state (see *The Record*, Fall 2001).

In the past year, these maps have been featured in the *New York Times*, *Boston Globe*, *Chicago Tribune*, *St. Louis Post-Dispatch*, *Kansas City Star*, and other newspapers. In addition, a feature article in the April 2002 issue of *National Geographic* increased the interest in the project.

## Singing Send Off



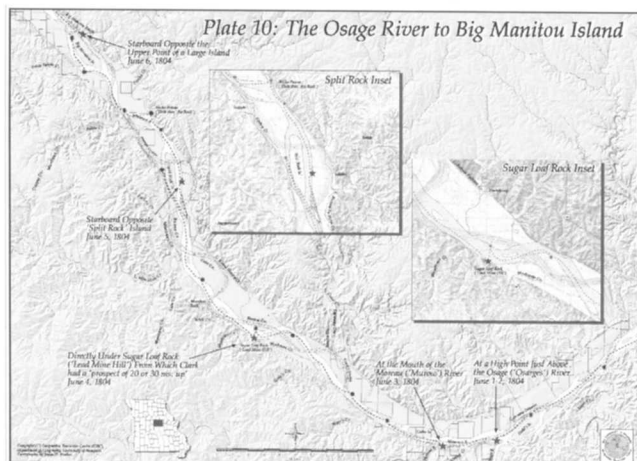
Members of the SOS Chorus serenade Sandy Walls at her retirement party on May 30. It was a day filled with gifts, cake and fond farewells as fellow SOS employees wished her well in her retirement and expressed their gratitude for Sandy's fifteen years of service, most recently as the Archives' administrative aide. At the beginning of June, Amy T. Robinson, who has been in the Archives' reference room for the past two years, assumed Sandy's duties.

## Three new members elected to the Friends Board of Directors

At the Friends of the Missouri State Archives Annual Meeting in June, three new members, Sally Sprague, Kas Mahfood, and Steve Ehlmann (see page 12) were elected to the Board of Directors.

**Sally Sprague** is the coordinator of the Lewis and Clark Bicentennial Monument and Park Project, which is part of the Special Projects Committee of the City of Jefferson. A native of St. Joseph, Sprague has served as the Governor's Mansion executive assistant to Governor and Mrs. Bond, and directed the University of Missouri President's House under Presidents James Olson and Melvin George.

**Kas Mahfood** is a Jefferson City businesswoman who founded the Old Munichburg Association in 2000. A life-long resident of Jefferson City, Mahfood is leading efforts to create a National Register Historic District that will help preserve the unique architectural qualities of the old south side neighborhood.



# **FRIENDS OF THE MISSOURI STATE ARCHIVES**

## **Annual Meeting**

### **June 19, 2002**

#### **MINUTES**

The Annual Meeting of the Friends of the Missouri State Archives was held on Wednesday, June 19, 2002, at the Native Stone Winery in Jefferson City, Missouri.

President Bob Priddy called the 2002 Annual Meeting to order at 5:15 p.m.

The motion was made by Sherman Hayes that the minutes of the 2001 Annual Meeting, printed in the Fall 2001 issue of *The Record*, be approved. Motion was seconded by Gary Kremer. The membership approved the 2001 Annual Meeting minutes.

The financial report was given by Treasurer Thomas Holloway. A motion was made and seconded that the financial report be approved. The financial report was approved by the members.

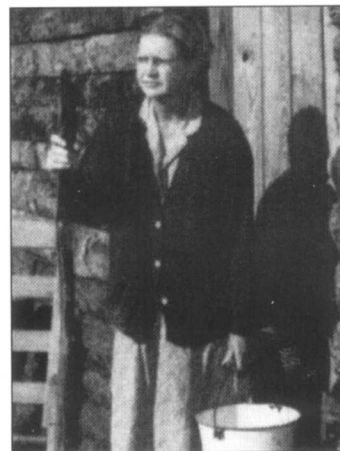
Nominations for election to the Board of Directors are Judge Steve Ehlmann of St. Charles, Missouri, Kas Mahfood and Sally Sprague of Jefferson City, Missouri. No nominations were made from the floor. A motion was made to approve the nominees to the Board of Directors. The motion was seconded and approved by the membership.

Re-elected to the Board of Directors are Ann Carter Fleming, Louis Gerteis, Gary Kremer, Carl Vogel, and Sandra Walls. A motion for approval was made by Lynn Morrow, seconded and approved by the members.

State Archivist Kenneth Winn informed the Friends that long-time Archives staff member Sandra Walls has retired and he expressed his regret at her leaving, but stated that Sandra will continue to work with the Friends of the Missouri State Archives. Sandra worked in the reference room prior to becoming Administrative Aide to the State Archivist a position she held for the last seven years. Sandra Walls has worked with the Friends since it was organized in 1989.

The Missouri State Archives report was given by State Archivist Kenneth Winn. He explained the budget cuts regarding the Missouri State Archives and that outside money was being requested. The Friends of the Missouri State Archives is funding the Archives public programs. The Archives website requests continue to increase dramatically.

The Secretary of State's African American Initiative has placed key documents on the Archives' website and has initiated an African American internship program.



*Tracie Snodgrass entertained the Friends of the Missouri State Archives with her portrayal of "The Mountain Maid of Roaring River," Jean Wallace. (Photo courtesy of the Missouri Humanities Council)*

The Lewis and Clark map exhibit will open at the State Archives in February of 2003 and will go on tour around the state in March. The Lewis and Clark Bicentennial Commission has awarded a \$50,000.00 grant to be administered by the Friends of the Missouri State Archives. A replica of Lewis and Clark's keelboat is currently on display at the Missouri State Information Center in Jefferson City.

The Archives website will soon have on-line 270 slave freedom suits from St. Louis, and World War I service cards database for the Army and Marines. The 19,000 Navy service cards will also go on-line soon. The Archives' exhibit on Mental Health will also be added to the website.

An exhibit of historic maps from the eighteenth century to the present is planned for the next Archives exhibit.

President Priddy expressed his excitement about what the Archives and the Friends are doing and especially about the new Friends of the Missouri State Archives website being designed this summer by Richard Smith.

A Website Development Task Force is being initiated and phone calls will be made asking for volunteers. Anyone who would like to volunteer for the task force can contact Richard or Sandra Walls.

President Bob Priddy adjourned the meeting at 5:45 p.m.

Submitted by Sandra L. Walls, Secretary

The business meeting was followed by a reception. The program this year was given by Tracie Snodgrass who portrayed "The Mountain Maid of Roaring River," Jean Wallace.

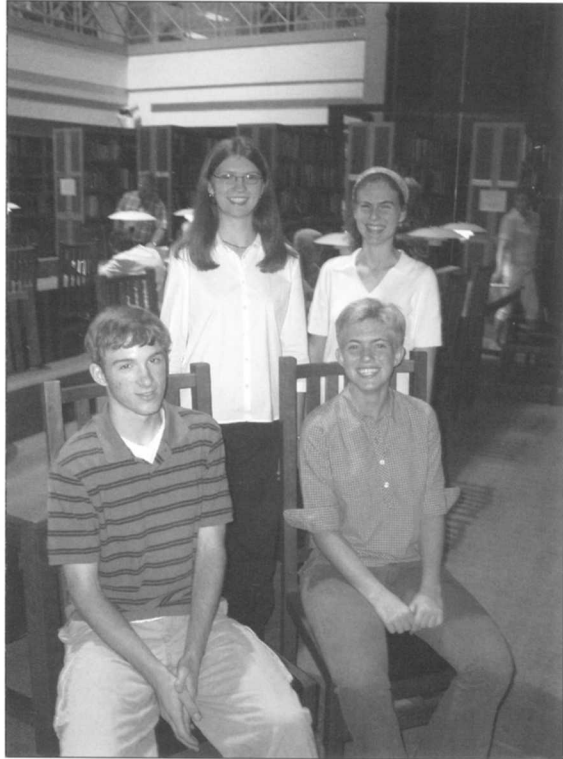


## Summer Students at the Missouri State Archives

**Below:** Summer Hires at the Missouri State Archives (standing left to right) Christine Lamberson, Maggie Mayhan, (seated left to right) Stephen Reading and Greta Snodgrass.

**Below right:** Supreme Court Interns Emily Strickland (left) and Erin Richter.

**Right:** Secretary of State Matt Blunt and Tankisha Henderson, the recipient of the first internship for the Missouri State Archives' new African American History Initiative program.



## Interest is High for Friends' Lewis & Clark Grants

Over 100 educators have requested informational guidelines and plan to apply for a Friends of the Missouri State Archives Lewis & Clark Educational Activities Grant during the first grant cycle. The deadline for receipt of first round applications is October 15, 2002, with awards determined by December 15, 2002. A second round will follow in the spring of 2003.

The Lewis & Clark Educational Activities Grant Program is a competitive grant program designed to distribute funds in amounts up to \$500 – no match required – to public, private, or parochial

schools wishing to organize a project or activity in commemoration of the Lewis & Clark Expedition. A core component of the program is to encourage the study of the expedition and, by extension, the role of what is now Missouri, in the westward expansion of the United States. This can be done effectively through the use of professional re-enactors, who bring expedition characters to life; through trunk programs, which allow children the experience of handling tools and materials similar to those the expedition carried; or through field trips to Lewis & Clark sites, allowing children to experience the terrain the expedition

traveled. Tangible experiences are key to retaining information and can provide a lasting impression. Giving educators the financial means to extend those experiences is the goal of the Lewis & Clark Educational Activities Grant.

For more information or to receive application materials contact Laura Wilson, Education Specialist, c/o Friends of the Missouri State Archives, PO Box 242, Jefferson City, MO 65102-0242; Phone: (573) 526-5326; e-mail: [wilsol@sosmail.state.mo.us](mailto:wilsol@sosmail.state.mo.us)

The Friends of the Missouri State Archives Lewis & Clark Educational Activities Grant Program is made possible with funding from the Missouri Lewis & Clark Bicentennial Commission.

## **Secretary Blunt Announces Missouri Historical Records Grant Program Cycle II Awards**

Secretary of State Matt Blunt has announced the second round of awards from the Missouri Historical Records Grant Program. The program was created through a collaborative effort between the state of Missouri and the National Historical Publications and Records Commission. The Missouri State Archives administers the program and the Missouri Historical Records Advisory Board is responsible for establishing funding priorities and the selection of successful applicants.

This spring, the board awarded funds to the following organizations:

Blue Springs Historical Society  
Caldwell County Historical Society  
Cedar County Library  
Columbia College  
Diaspora Connections Unlimited  
Friends of Historic Boonville  
Harrison County Genealogical Society  
Joplin Historical & Mineral Museum  
Joseph R. Palmer Family Memorial Library  
Kansas City Art Institute  
Kingdom of Callaway Historical Society  
Kirksville College of Osteopathic Medicine  
Lincoln University  
Midwest Jesuit Archives  
Missouri School for the Blind  
Northland Genealogical Society  
Osage County Historical Society  
Platte County Historical Society  
Missouri Valley College  
Moniteau County Historical Society  
Morgan County Historical Society



## **Model of Lewis and Clark's Keelboat Displayed at the State Archives**

During the spring and summer, visitors to the Kirkpatrick State Information Center had the opportunity to view this 1/2 size scale replica of the keelboat used by Lewis & Clark in the westward leg of the expedition of the Corps of Discovery. Butch Bouvier of L&C replicas of Onawa, Iowa constructed the model for the Missouri Department of Conservation.

The keelboat of the Corps of Discovery expedition was custom-built in Pittsburgh, Pennsylvania for Meriwether Lewis. It was 55 feet long and 8 feet wide with a 32-foot tall mast. The keelboat had no real name. Lewis and Clark referred to it as "the Barge." The boat could carry 12 tons (in addition to the crew).

The boat went up the Missouri River as far as North Dakota. In April of 1805, 5 members of the expedition and the hired French boatmen headed the keelboat down the Missouri River back to St. Louis. It arrived in May of 1805. Its cargo included: mineral and plant specimens; buffalo robes; elk and mule deer antlers; ram horns; live animals: prairie dog, grouse and magpies. These items were then transported to President Thomas Jefferson, originator of the expedition.

NACCCA  
National Military Heritage Society,  
Inc.  
Rockhurst University  
St. Francis Xavier Church  
St. Louis Genealogical Society  
St. Paul Lutheran High School  
Sikeston Cultural Development  
Corporation  
Society of the Sacred Heart

Stars and Stripes Museum  
University of Missouri –St. Louis  
Ursuline Provincialate  
Washington Historical Society  
Washington University in St. Louis  
Webb City Historical Society  
Webster County Historical Society  
Webster Groves Public Library  
Windsor Historical Society



## 100 Years of The Missouri State Fair



By Laura R. Jolley  
Photograph Archivist



Found in the Missouri State Archives' collection of Department of Agriculture records, the Missouri State Fair Collection contains thousands of photographs from the past century of the Missouri State Fair.

# PICTURE THIS

August 8-18, 2002, Missouri celebrated its 100<sup>th</sup> State Fair in Sedalia. Though various agricultural and mechanical associations organized fairs as early as the 1830s, these were sporadic events. It was not until 1853 that the General Assembly formalized the business of fairs by incorporating the Missouri State Agricultural Society. Hoping to promote agriculture in the state and encourage the exchange of ideas among farmers, this society opened the first of its three annual fairs in Boonville on October 3, 1853. Because poor transportation made it difficult for farmers to participate in this centralized fair, local agricultural associations organized an increasing number of county fairs throughout the 1850s.

It was not until the late nineteenth century that farmers used the political clout of various agricultural organizations to create a permanent Missouri State Fair. One such group, the Missouri Horse Breeders Association, helped establish a law that would require the licensing of bookmakers. Money from licenses went into a "Horse Breeders Fund," which state representative Cyrus F. Clark, a horse and mule breeder from Audrain County, proposed should be used to underwrite the cost of a state fair. Clark's bill was signed into law April 19, 1899.

Immediately the State Board of Agriculture set about the task of accepting bids for a suitable fair site. Major contenders to host the fair were the cities of Centralia, Chillicothe, Marshall,

Mexico, Moberly, and Sedalia. After much lobbying by each of these cities, the Board selected Sedalia as the winner, primarily because it offered 160 acres of land and agreed to furnish water and extend its streetcar lines to the site. Organizing and operating a profitable fair proved to be an immediate challenge. There was not enough money in the Horse Breeders Fund to construct a fair by 1900. Despite Clark's original assurances that no general revenue money would need to be used for the state fair, Governor Lon V. Stephens had to ask the 41<sup>st</sup> General Assembly for an appropriation of \$50,000 so that the fair could be held in 1901.

The appropriation was granted on April 15, leaving the State Fair Executive Committee less than five months to construct the racetrack and all of the necessary buildings by September 9<sup>th</sup>, the day the fair was scheduled to begin. New challenges also arose. The street railway lines could not be extended to the fair due to the unavailability of steel. Construction of the racetrack lagged far behind schedule and part of it had to be replaced. In the worst drought in Missouri history, Sedalia was unable to get water lines to the fair grounds because material for the pipes had not arrived.

Despite all this, Missouri's first state fair opened on schedule and proved to be a marginal success. With the exception of a one-year interruption during World War II, the Missouri State Fair has continued to be a major annual event for entertainment and the demonstration of Missouri's agricultural strengths.

## DONATIONS TO THE FRIENDS OF THE MISSOURI STATE ARCHIVES

January 2002 through June 2002

### GIFTS

Sarah Coppeters, St. Paul, MN  
Beverly D. Crain, Jefferson City, MO

### NEW MEMBERS

**Lewis and Clark Membership-\$1,000**  
B. J. DeLong, Jefferson City, MO

**Thomas Hart Benton Memberships-\$100**

The Honorable Matt Blunt,  
Springfield, MO  
Kas Mahfood, Jefferson City, MO  
Rebecca Smythe-Bisenman, Las Vegas,  
NV  
Sally B. Sprague, Jefferson City, MO

**Membership-\$50**

Opal Boyett, Haltom City, TX

**Basic Memberships-\$25**

Bonnie Dunlap, Jefferson City, MO  
Patricia D. Laughlin, Fortuna, CA  
Linda E. Lewis, Kansas City, MO  
Liz Murphy, Lawson, MO  
Perry Onstot, Kansas City, MO  
Thelma S. Peters, Coolidge, AL  
The Powers Museum, Carthage, MO  
Mark Royston, Everett, WA  
Warren Solomon, Jefferson City, MO  
Mark C. Stauter, Rolla, MO  
Gregory C. Stockard, Jr., Jefferson City,  
MO

## DONATIONS TO THE MISSOURI STATE ARCHIVES

January 2002 through June 2002

### IMMIGRATION, FAMILY HISTORY AND COUNTY RECORDS

Buehrle, Bill: *The Buehrle Family History: 1694-2001.*

Callison, C. Stuart:

- *Bollman-Christy Family.*
  - *Wilkerson-Callison Family.*
- Both by C. Stuart Callison.

Fuller-Mitchell, Joan Diane: *Pierre and Elizabeth Mathieu Family History Book*, by Joan Diane Fuller-Mitchell.

Greene County Archives and Record Center: *Taney County Land Sales* with name index and Taney County plat book, c. 1926.

Grove, Dudley R.: *The Pritchards of Mississippi and Tennessee*, by Dudley Roulhac Grove, et al.

Harmes, Harry H.: *Who's Who Among HCJ Families: The Harris-Cooper-Johnson Story*, by John W. Harris.

Jordan, Kenneth R.:

- *The Apel Family History.*
  - *The Bohl Family History.*
  - *The Gilmore / Davis Family History.*
  - *The Hancock Family History.*
  - *The Jordan Family History.*
  - *The Pfitzinger Family History.*
- All by Kenneth R. Jordan.

Mid-Mo Genealogical Society: *Newspaper Obituaries from the California Democrat: California, Moniteau County, Missouri*, books 13 and 14, (For persons born from 1930-1939), by Alma Jeane Enloe Wheeler.

Missouri State Daughters of the American Revolution: *A Location Index for Missouri Cemeteries*, Vol. I & II, by F. Susan Brown Biggs and Shirley M. Brown.

Moore, Gaynelle Jenkins: *A Supplement to the Spalding Report: The Descendants of Charles Spalding (1783-1856)*, by Gaynelle Jenkins Moore.

Morris, Charles R.: *Osage County, Missouri Marriage Records: 1842-1900*, compiled by Hallie Mantle.

Perkins, Dorothy Neblett: *Thomas Norfleet of 1666: Some of His Descendants and Allied Families*, Vol. I, by Dorothy Neblett Perkins.

Picard, Sue Butterfield: *Descendants of Benjamin Butterfield with Emphasis on the Nathaniel Butterfield Line*, by Sue Butterfield Picard.

St. Charles County Circuit Court: *St. Charles County Circuit Court Civil / Criminal Case File Index: 1830-1930.*

Saline County Probate Clerk: *Saline County Probate Court Case File Index: 1821-April 2001.*

Weant, Kenneth E.: *Boone County Marriages: 1 December 1900-26 April 1919*, Vol. 3., by Kenneth E. Weant.

Ziegelbein, Denise: *Jefferson City, Missouri ConSurvey Directory, 1961.*

### MISSOURI / UNITED STATES HISTORY

Bennet, Marie: *St. Joseph, Missouri: Trails to the Past*, edited by Emmet J. Bryson & John E. Tapia.

Everman, Mike: *Lest We Forget: The Passage From Africa to Slavery and Emancipation*, by Velma Maia Thomas.

Greene County Archives and Records Center: *Scenes and Adventures in the Semi-Alpine Region of the Ozark Mountains of Missouri and Arkansas* (reprint), by Henry Rowe Schoolcraft.

Harper, Christine Froechtenigt: *The Water Wizard: John F. Wixford and the Purification of the St. Louis Water Supply in 1904*, by Christine Froechtenigt Harper.

Hoffhaus, Charles E.: *Chez Les Canses: Three Centuries at Kawsmouth: The French Foundations of Metropolitan Kansas City*, by Charles E. Hoffhaus.

Luebbering, Ken: *The History of Our Church: 1839-1989, One Hundred Fifty Year Immanuels United Church of Christ, Holstein.*

Missouri United Methodist Archives: *Index for Martyrdom in Missouri, 1870* (reprint), by Rev. W. M. Leftwich.

Rogers, Bishop Bill: *The Country Boy That God Called to the Nations*, by Bishop Bill Rogers.

Sarvis, Will: *J. V. Conran: Political Organizer of Southwest Missouri*, by Will Sarvis.

Weaver, H. Dwight:

- *Lake of the Ozarks: The Early Years.*
  - *Lake of the Ozarks: Vintage Vacation Paradise.*
- Both by H. Dwight Weaver.

### MILITARY HISTORY

McGhee, James E., *Letter and Order Book Missouri State Guard: 1861-1862*, by James E. McGhee.

Williams, Betty Harvey: *Soliders of the War of 1812 with a Missouri Connection*. Vol. A-M and Vol. N-Z, by Betty Harvey Williams.



**NEW BOOK ACCESSIONS****IMMIGRATION, FAMILY HISTORY AND COUNTY RECORDS**

*Gone But Not Forgotten: A Brief History of the Burials in the Jewish Cemeteries of Kansas City, Missouri*, by Anita Loeb.

*Laclede County Missouri: History and Families*, by the Laclede County Genealogical Society.

*Reconstructed 1890 Cape Girardeau County, Missouri Census: Abstracted for the 1890 Personal Property Tax List*, by the Cape Girardeau County Archives.

**MISSOURI / UNITED STATES HISTORY**

*Abiel Leonard: Yankee Slaveholder, Eminent Jurist, and Passionate Unionist*, Dennis K. Boman.

*Before They Were Cardinals: Major League Baseball in Nineteenth-Century St. Louis*, by Jon David Cash.

*A City Divided: The Racial Landscape of Kansas City, 1900-1960*, by Sherry Lamb Schirmer.

*Columbia, Missouri: Images of Our Lives Since 1901*, by the *Columbia Daily Tribune*.

*Encyclopedia of Missouri Courthouses*, by Marian M. Ohman.

*Farmington, Missouri: The First 200 Years*, by the Bicentennial History Book Committee.

*Final Resting Place: The Lives and Deaths of Famous St. Louisans*, by Kevin Amsler.

*In and About the Missouri School of Mines: The Photography of George E. Ladd, Director of MSM, 1897-1907*.

*The Journals of the Lewis and Clark Expedition*, Vol. 12, edited by Gary E. Moulton.

*Missouri Conservationist*, Vol. 62 (2001), No. 1-12.

*Railroads and American Law*, by James W. Ely, Jr.

*St. Louis Architecture for Kids*, by Lee Ann Sandweiss.

*Seasons in the Sun: The Story of Big League Baseball in Missouri*, by Roger D. Launius.

*Surveys and Surveyors of the Public Domain: 1875-1975*, by Loa Cazier.

**MILITARY HISTORY**

*Battle of Lone Jack*, by Joanne Chiles Eakin.

*The Bravest of the Brave: Pindall's 9<sup>th</sup> Missouri Battalion of Sharpshooters*, by Carolyn M. Bartels.

*The Eve of the War: Valley of the Shadow*, by Edward L. Ayers and Anne S. Rubin.

*Guide to Civil War Manuscripts in the Missouri Historical Society Archives*, compiled by Dennis Northcott.

*The Half Not Told: The Civil War in a Frontier Town*, by Preston Filbert.

**MISCELLANEOUS**

*Exhibiting Dilemmas: Issues of Representation at the Smithsonian*, by Amy Henderson and Adrienne L. Kaepler

**RECENT ACCESSIONS****January 2002 - June 2002**

This accessions listing is provided to the research community to advise it of recent Archives accessions of state and local government records. More detailed listings of the Missouri State Archives holdings are available at the Archives facility.

Highlights from the accessioned materials from the first six months of 2002 include House redistricting files and Poor Farm records from Caldwell, Callaway, Clinton, Dekalb, Holt, Howard, and Platte Counties.

**LEGISLATIVE, EXECUTIVE, AND JUDICIAL BRANCH RECORDS****Appeals Court, Southern District.**

Case Files #22075-#24682. 1998 - 2000. 127 cubic feet.

**Department of Conservation.**

Lewis and Clark: Corps of Discovery in Missouri. 2001. 1 VHS tape.

**Elementary and Secondary Education.**

Finding Missouri: Our History & Heritage. 2000. 2 VHS tapes. Two video tapes covering 19 different historical programs on Missouri. The programs include documentary footage, reenactments and interpretations of historical events and people, views of historical sites, narrations, and interviews with experts. Some of the topics include the Civil War, St. Louis World's Fair, Route 66, African American History, early European settlement, and Missouri geography.

**General Assembly.**

Session Laws. 2001. 0.1 cubic foot

Truly Agreed to and Passed Bills signed by the Governor from the First Extraordinary Session of the 91st General Assembly (2001). Includes HB 3; HB 4; HB 5, 1, and 2; SB 3, 8, and 9; SB 4, 1, 5, and 6.

House Concurrent, Courtesy, and Joint Resolutions. 2001. 1 cubic foot  
House concurrent resolutions (#1-34), House joint resolutions (#1-23), House courtesy resolutions (#3352-3363) from 91st General Assembly, 1<sup>st</sup> Regular Session (2001).

House Records. 2001. 4 cubic feet  
Miscellaneous House records from the 91st General Assembly 1st Regular Session (2001) and First Extraordinary Session (2001).

House Research, Redistricting Files. 4 cubic feet. Files of the House Research Staff concerning Congressional redistricting (1991) and legislative redistricting (1991 including 1981 data).

Senate Bills. 2001. 0.6 cubic foot.  
Senate bills from 91st General Assembly 1<sup>st</sup> Extraordinary Session (2001) and vetoed Senate bills from 1st Regular Session (2001).

Senate Records. 2001. 3 cubic feet.  
Miscellaneous Senate records from 91st General Assembly 1st Regular Session (2001) and from Veto and Special Sessions (2001).

Legislative Committees. 1994-1996. 13 cubic feet. Public Employee Retirement System (PERS) Files.

Standing Legislative Committees. 2001. 2 cubic feet. Senate Committee Minutes and Roll Calls for 91<sup>st</sup> General Assembly 1st Regular Session.

**Governors.**

Petition for Missouri Veterans' Home (St. James). 1992. 0.1 cubic foot. Petition (62 pages) for construction of Missouri Veterans' Home in St. James, MO, presented to Anthony D. Moulton on Wednesday, March 11, 1992, by John Aubertin and Helen Kirkpatrick. Placed in the subject files for Gov. Ashcroft's administration.

Records of Governor Mel Carnahan. 1993-2000. 22 cubic feet. Records of Governor Mel Carnahan, including extraditions and waivers (1993-1996), press releases (1993-2000), Constituent Services agency response letters (1998-1999), and videos. Miscellaneous subject and issue files, judicial appointment letters (Feb 1998 -Aug 1999), governor's appointment correspondence (1996), miscellaneous correspondence (1993-2000), and miscellaneous legislation and correspondence (1997-2000).

(Continued on page 10)

## LEGISLATIVE, EXECUTIVE, AND JUDICIAL BRANCH RECORDS

(Continued from page 9)

### Legislative Papers.

Papers of Rep. Mary Hagan-Harrell. 11 cubic feet.

### Office of the Secretary of State.

#### Commissions.

Trademark/service marks #9380 - #11595. (1/28/87-8/30/91). Executive orders (1997-2001). Oaths of office for elected state officials, representatives, and senators (1997-1999). 5 cubic feet.

### Office of the Secretary of State. State

#### Library.

Missouri Depository Documents. 7.5 cubic feet

### Department of Social Services. Division of

#### Medical Services. Administrative Unit.

Subject Files, Fiscal Year 1994. 3 cubic feet.

### Supreme Court of Missouri.

Case files. January 2000. 30 cubic feet.

## COUNTY AND MUNICIPAL RECORDS

### Audrain County.

Recorder. Deeds. 1997-2001. 23 reels.

### Caldwell County.

Clerk. Poor Farm Records. 1897-1966. 0.5 reel.

### Callaway County.

Recorder. Deeds. 2001. 2 reels.

Clerk. Poor Farm Records; miscellaneous records. 2 reels. 1899-1932; Public Relief records; Poor Farm Settlements 1922-1930, 1931-1932, 1932-1934, 1935-1937

### Carroll County.

Circuit Court. 19 reels/30 cubic feet  
Witness/Juror Affidavits. 1848-1953. Record of Instruments Filed. 1885-1934. Abstract of Demands. 1876-1911. Circuit Court Transcripts. 1871-1916. Justice of Peace Dockets. 1859-1871, 1933-1939. Court Records. 1858-1901. Miscellaneous Records. 1833-1919.

### Carroll County.

Probate Court. Probate Index. 1845-1885. 1 reel.

### Clay County.

Probate Court. Case files and index. 1820-1900. 45 reels

### Christian County. City of Ozark.

Clerk. Planning and zoning records (1993-1996), city council minutes (1907-1919, 1934-1990), ordinances and resolutions (1900-1992), audit reports (1962-1999), agendas (1983-1997) 6 reels.

### Clinton County.

Clerk. Poor Farm records, inmate records

(1947), Outdoor Relief Records (1838-1904), Miscellaneous (1859-1959). 0.5 reel.

### Cooper County.

Circuit Court. Case files. 1841-1843. 10 reels.

### Dade County.

Circuit Court. Case files. 1862-1899. 4 reels.

### Daviess County.

Clerk. Register of Births and Stillbirths, Permanent Record of Births, Register of Deaths, Permanent Records of Deaths. 2 reels.

### Dekalb County.

Probate Court. Case files. 1859-1984. 31 reels.

Clerk. Poor Farm records. Warrant

Register (1880-1902, 1925-1926) 0.5 reel.

### Dent County.

Circuit Court. Justice of Peace/Civil-Criminal (1870-1905), appealed cases (1900-1951). 3 reels.

### Franklin County.

Probate Court. Case files. 1846-1925. 13 reels

### Greene County. City of Walnut Grove.

Clerk. Minutes, financial reports, planning and zoning, ordinances. 1900-1997. 4 reels.

### Harrison County.

Circuit Court. Miscellaneous. 1862-1961. 1 reel.

### Holt County.

Clerk. Poor Farm Records. 1873-1949. 0.5 reel.

### Howard County.

Clerk. Poor Farm records. 1847-1917. 0.5 reel.

### Howell County.

Circuit Clerk. Miscellaneous records. 1867-1908.

Assessor. Land Register/assessment of taxes. 1867-1873.

Clerk. Miscellaneous records. 1867-1887. Miscellaneous records. 1863-1903. 1.5 reels.

### Jackson County.

Probate Court-Independence. Case files and case file index. 1828-1900. 34 reels.

### Jackson County. City of Kansas City.

Kansas City Municipal Correctional Institution. B/W copy prints. 1970-1989. 164 units.

### Marion County.

Recorder. Deeds. 1996-1997. 221 reels.

### Moniteau County.

Superintendent of Schools. Kreamer School Record Books. 1870-1942. 1 reel.

### Osage County.

Recorder. Index to Deeds. 2000. 1 reel.

### Pemiscot County.

Circuit Court. Case files and index. 1901-1919. 10 reels.

### Pettis County.

Recorder. Miscellaneous records. 1833-1994. 468 reels.

### Phelps County.

Recorder. Marriage applications. 1881-1943. 19 reels.

### Platte County.

Clerk. Poor Farm records. 1866- 1928. 0.5 reel.

### Polk County.

Collector. Tax books. 1999-2000. 5 reels.

### Randolph County.

Collector. Tax books. 1990-1999. 27 reels.

### St. Louis County.

Probate Court. Guardianship case files. 1802-1900. 71 reels.

Probate Court. Case files. 1862-1875. 10 reels.

### Scotland County.

Probate Court. Case files. 42 reels.

### Shelby County.

Recorder. Marriages and Index to Marriages. (1835-2001), Military Discharges and Index (1918-2001), Index to Deeds (1835-2000). 27 reels.

### Texas County. City of Cabool.

Clerk. Minutes (1913-1919), ordinances and resolutions (1906-2000), Deeds and easements (1853-1999). 9 reels.

### Webster County.

Circuit Court. Index to case files. 17 reels.

### City of St. Louis.

Circuit Court. General Term Record. Volumes 1 and 2. 1866-1883. 2 reels.

Circuit Court. Index, Direct and Indirect. Return Docket. 1863-1869. 1 reel.

Probate Court. Case files. 1897. 21 reels.

### Manuscripts.

Giffen, Lawrence Everett. *Walks in Water: The Impact of Steamboating on the Lower Missouri River*. Unpublished, Footnoted. Includes a prologue and bibliography. 2001. 1 volume.

Central Bank: 100 Year Anniversary, 1902-2002. One video documenting the history of Central Bank in Jefferson City, Missouri. 1 VHS tape.

Snodgrass, Harry M. Sound Recordings Four sound recordings of piano solos by Harry Snodgrass, "King of the Ivories," former Missouri State Penitentiary inmate. The records were produced by Brunswick Record Co. Several include introductions by Harry's agent, J. M. Witten, who was also his announcer on WOS radio. Titles include: "Dusting the Keys," "Blue Evening Blues," "The Moonlight, A Waltz and You," "Three O'clock in the Morning," "The Prisoners Song," and "Land of My Sunset Dreams." 1926. 4 discs.

Pleasant Grove Christian Church (Bates County). Records. 1874-1999. 3 reels.

United States City Directories: Carthage, Joplin, Kansas City, Springfield. 1865-1915 (incomplete). 9 reels

# Become a Friend of the Missouri State Archives!

It's time to pledge your support for one of Missouri's most valuable historical and genealogical resources. Through fund-raising, education, acquisitions, and other activities, the Friends strengthen the Archives' service to scholars, genealogists, and the public. Membership is open to all with an interest in Missouri history. Members receive *The Record*, the official publication of the Friends.

Yes, I want to make a commitment to the Friends of the Missouri State Archives to support the preservation and access of Missouri's heritage.

- \$25 Basic Membership
- \$50 Membership
- \$75 Membership
- \$100 Thomas Hart Benton
- \$500 Jefferson Membership
- \$2000 Truman Membership
- \$1000 Lewis and Clark Membership

Instead of a membership, enclosed is my tax-deductible donation:

**Contribution Only**

Name: \_\_\_\_\_

Address: \_\_\_\_\_

City \_\_\_\_\_ State \_\_\_\_\_ Zip \_\_\_\_\_

Telephone Number (please include area code): \_\_\_\_\_

E-mail address: \_\_\_\_\_

Make check payable to:  
Friends of the Missouri State Archives  
Mail to: Friends of the Missouri State Archives,  
P. O. Box 242, Jefferson City, MO 65102-0242

The Friends of the Missouri State Archives  
is a not-for-profit organization.



## Staff Profile: Kevin Edwards



When Kevin Edwards began working at the Missouri State Archives in January 2001 he was not only starting a new job, he was also helping to launch one of the Archives' newest initiatives. As the first administrator of the Missouri Historical Records Grant Program (MHRGP) Edwards helps institutions throughout Missouri secure financial assistance to preserve and make accessible their historic records.

Kevin works directly with a variety of institutions to help them through the grant application process by presenting workshops and by reviewing drafts of project proposals. Kevin then prepares summaries of the completed applications for the Missouri Historical Records Advisory Board, which makes the final decisions on which projects are awarded financial assistance. Once the grants have been awarded, Kevin helps provide archival training to local institutions and monitors the progress of each project.

"I enjoy working with people from institutions all over the state," says Edwards, "and I get a real sense of satisfaction in helping them."

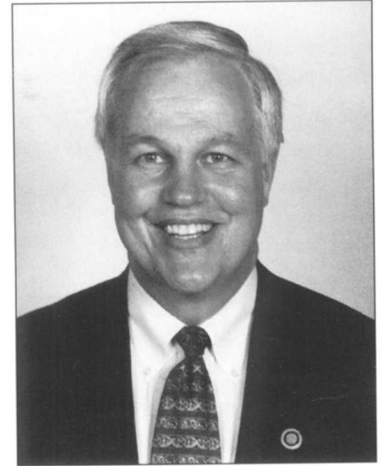
A native of Springfield, Missouri, Kevin received his Bachelors degree from Drury College. He has a Masters degree in history from Southwest Missouri State University and a Law degree from Washington University in St. Louis.

# Friends' Profile: Stephen Ehlmann

One of the newest members to join the Friends of the Missouri State Archives Board of Directors is Stephen Ehlmann. A native of St. Charles, Ehlmann earned an undergraduate degree from Furman University and a Masters Degree in history from the University of Missouri-Columbia. After teaching for seven years in public schools, he earned a law degree from Washington University and began practicing as an attorney.

Ehlmann first won election to the Missouri State Legislature in 1988, representing the 19<sup>th</sup> legislative district in the Missouri House of Representatives until 1993. From 1993-2001 Ehlmann served as a member of the Missouri State Senate, where he was Minority Floor Leader. In 2000 he won election as an Associate Circuit Judge for the 11<sup>th</sup> Circuit Court, where he continues to serve.

Long active in his community, Ehlmann is a member of the Rotary Club and serves on the board of directors of the Boys and Girls Club of St. Charles. He and his wife Jean have two sons, Brendan and William.



---

*Friends of the Missouri State Archives*  
P.O. Box 242  
Jefferson City, MO 65102-0242

NON-PROFIT ORG.  
U.S. POSTAGE  
PAID  
JEFFERSON CITY, MO  
65101  
PERMIT # 152